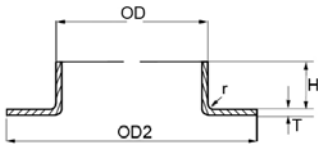


Welding Collar DIN 2642

ISO, Metric
EN 10204 3.1



OD mm	T mm	Type	OD2 mm	H mm	r mm	Kg / pc		4301 4307	4404
17.20	2.00	ISO	42	6.0	3.00	0.021			●
21.30	2.00	ISO	47	6.0	3.00	0.026		●	●
21.30	3.00	ISO	47	6.0	3.00	0.032			●
25.00	2.00	Metric	58	7.0	3.00	0.034			●
26.90	2.00	ISO	58	8.0	3.00	0.039		●	●
26.90	3.00	ISO	58	8.0	3.00	0.058			●
28.00	2.00	Metric	68	8.0	3.00	0.048		●	●
30.00	2.00	Metric	68	8.0	3.00	0.054			●
32.00	2.00	Metric	68	9.0	3.00	0.061		●	●
33.70	2.00	ISO	68	9.0	3.00	0.051		●	●
33.70	3.00	ISO	68	9.0	3.00	0.077		●	●
38.00	2.00	Metric	78	10.0	3.00	0.067		●	●
40.00	2.00	Metric		10.0		0.069		●	●
42.40	2.00	ISO	78	10.0	3.00	0.101		●	●
42.40	3.00	ISO	78	10.0	3.00	0.090		●	●
44.50	2.00	Metric	90	10.0	3.00	0.087			●
48.30	2.00	ISO	88	10.0	3.00	0.082		●	●
48.30	3.00	ISO	88	10.0	3.00	0.123		●	●
50.80	2.00	Metric	102	11.0	3.00	0.100			●
54.00	2.00	Metric	102	12.0	3.00	0.114		●	●
60.30	2.00	ISO	102	12.0	3.00	0.107		●	●
60.30	3.00	ISO	102	12.0	3.00	0.161		●	●
63.50	2.00	Metric	115	13.0	3.00	0.123			●
70.00	2.00	Metric	122	12.0	2.00	0.154		●	●
71.00	3.00	Metric	122	12.0	3.00	0.231			●
76.10	2.00	ISO	122	12.0	3.00	0.145		●	●
76.10	3.00	ISO	122	12.0	3.00	0.217		●	●
76.10	4.00	ISO	122	12.0	3.00	0.289			●
84.00	2.00	Metric	138	13.0	3.00	0.186		●	●
86.00	3.00	Metric	138	15.0	3.00	0.279		●	●
88.90	2.00	ISO	133	13.0	3.00	0.164		●	●
88.90	3.00	ISO	133	13.0	3.00	0.277		●	●
88.90	4.00	ISO	139	12.0	3.00	0.369			●
101.60	2.00	Metric	150	14.0	3.00	0.206		●	●
101.60	3.00	Metric	150	14.0	3.00	0.309			●
104.00	2.00	Metric	158	16.0	3.00	0.237		●	●
106.00	3.00	Metric	158	16.0	3.00	0.356		●	●
108.00	4.00	Metric	158	14.0	4.00	0.428			●
114.30	2.00	ISO	158	14.0	3.00	0.214		●	●
114.30	3.00	ISO	158	14.0	4.00	0.321		●	●
114.30	4.00	ISO	158	14.0	5.00				●
129.00	2.00	Mertric	188	15.0	3.00	0.313		●	●
131.00	3.00	Metric	188	20.0	4.00	0.470		●	●
139.70	2.00	ISO	184	15.0	4.00	0.259		●	●
139.70	3.00	ISO	184	15.0	4.00	0.417		●	●
154.00	2.00	Metric	212	19.0	3.00	0.378		●	●
156.00	3.00	Metric	212	20.0	4.00	0.566		●	●

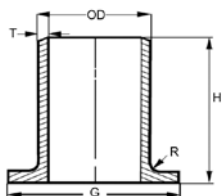


Welding Collar DIN 2642

ISO, Metric
EN 10204 3.1



OD mm	T mm	Type	OD2 mm	H mm	r mm	Kg / pc		4301 4307	4404
159.00	4.00	Metric	212	18.0	4.00	0.637		●	
168.30	2.00	ISO	212	18.0	4.00	0.318		●	●
168.30	3.00	ISO	212	18.0	4.00	0.477		●	●
168.30	4.00	ISO	212	18.0	4.00	0.637		●	
204.00	2.00	Metric	268	21.0	4.00	0.543		●	●
206.00	3.00	Metric	268	25.0	4.00	0.815		●	●
219.10	2.00	ISO	268	22.0	5.00	0.458		●	●
219.10	3.00	ISO	268	22.0	5.00	0.708		●	●
219.10	4.00	ISO	268	22	5.00			●	
254.00	2.00	Metric	320	24.0	5.00	0.711		●	●
256.00	3.00	Metric	320	25.0	5.00	1.066		●	●
273.00	2.00	ISO	320	23.0	5.00	0.532		●	●
273.00	3.00	ISO	320	23.0	5.00	0.835		●	●
273.00	4.00	ISO	320	23.0	5.00	1.113		●	●
304.00	2.00	Metric	370	19.0	5.00	0.804		●	●
306.00	3.00	Metric	370	21.0	5.00	1.206		●	●
323.90	2.00	ISO	370	19.0	5.00	0.650		●	●
323.90	3.00	ISO	370	19.0	5.00	0.962		●	●
323.90	4.00	ISO	370	19.0	5.00	1.282		●	●
355.60	3.00	ISO	430	21.0	5.00	1.518		●	●
406.40	3.00	ISO	482	21.0	5.00	1.770		●	●
406.40	4.00	ISO	482	21.0	5.00	2.360		●	●
457.20	3.00	ISO	532	25.0	5.00	2.087		●	●
457.20	4.00	ISO	532	25.0	5.00	2.873		●	
508.00	3.00	ISO	587	27.0	5.00	2.286		●	●
508.00	4.00	ISO	587	27.0	5.00	3.048		●	●
609.60	3.00	ISO	685	26.0	5.00	2.719		●	●
609.60	4.00	ISO	685	26.0	5.00	3.625		●	



Stub End Type A

MSS SP 43, ASTM-A 403 ASME B16.9
EN 10204 3.1



D mm	D2 mm	INCH-GAS-SCH mm	h mm	G mm	R mm	Kg / pc	304/L		316/L	
							Welded	Seamless	Welded	Seamless
21.34	2.11	1/2" SCH 10S	50.8	34.9	3.18	0.06		●		●
21.34	2.77	1/2" SCH 40S	50.8	34.9	3.18	0.08		●		●
26.67	2.11	3/4" SCH 10S	50.8	42.9	3.18	0.08		●		●
26.67	2.87	3/4" SCH 40S	50.8	42.9	3.18	0.10		●		●
33.40	2.77	1" SCH 10S	50.8	50.8	3.18	0.13		●		●
33.40	3.38	1" SCH 40S	50.8	50.8	3.18	0.16		●		●
42.60	2.77	1.1/4" SCH 10S	50.8	63.5	4.76	0.18		●		●
42.16	3.56	1.1/4" SCH 40S	50.8	63.5	4.76	0.23		●		●
48.26	2.77	1.1/2" SCH 10S	50.8	73.0	6.35	0.21		●		●
48.26	3.68	1.1/2" SCH 40S	50.8	73.0	6.35	0.28		●		●
60.33	2.77	2" SCH 10S	50.8	92.1	7.94	0.34		●		●
60.33	3.91	2" SCH 40S	63.5	92.1	7.94	0.47		●		●
73.03	3.05	2.1/2" SCH 10S	63.5	104.8	7.94	0.45		●		●
73.03	5.16	2.1/2" SCH 40S	63.5	104.8	7.94	0.74		●		●
88.90	3.05	3" SCH 10S	63.5	127.0	9.53	0.57		●		●
88.90	5.49	3" SCH 40S	63.5	127.0	9.53	1.01		●		●
114.30	3.05	4" SCH 10S	76.2	157.2	11.11	0.87		●		●
114.30	6.02	4" SCH 40S	76.2	157.2	11.11	1.68		●		●
168.28	3.40	6" SCH 10S	88.9	215.9	12.70	1.64	●	●	●	●
168.28	7.11	6" SCH 40S	88.9	215.9	12.70	3.37	●	●	●	●
219.08	3.76	8" SCH 10S	101.6	269.0	12.70	2.65	●		●	
219.08	8.18	8" SCH 40S	101.6	269.0	12.70	5.67	●		●	
273.05	4.19	10" SCH 10S	127.0	323.9	12.70	4.38	●		●	
273.05	9.27	10" SCH 40S	127.0	323.9	12.70	9.55	●		●	
323.85	4.57	12" SCH 10S	152.4	381.0	12.70	6.74	●		●	
323.85	9.53	12" SCH 40S	152.4	381.0	12.70	13.80	●		●	
355.60	4.78	14" SCH 10S	152.4	412.80	13.00	9.12	●		●	
406.40	4.78	16" SCH 10S	152.4	469.90	13.00	11.02	●		●	
457.20	4.78	18" SCH 10S	152.4	533.40	13.00	12.90			●	
508.00	5.54	20" SCH 10S	152.4	584.20	13.00	14.51			●	
609.60	6.35	24" SCH 10S	152.4	692.20	13.00	21.01			●	