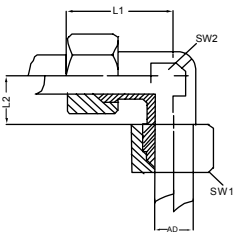


Straight Union

DIN 2353 / DIN EN ISO 8434-1
EN 10204 3.1



| AD mm | Code | Bar | L1 mm | L2 mm | SW1 mm | SW2 mm | Art. No. | Kg / pc | 316 Ti |
|-------|------|-----|-------|-------|--------|--------|----------|---------|--------|
| 6 | L | 315 | 44 | 10 | 14 | 12 | HS10 | 0.06 | ● |
| 8 | L | 315 | 45 | 11 | 17 | 14 | HS10 | 0.08 | ● |
| 10 | L | 315 | 48 | 13 | 19 | 17 | HS10 | 0.11 | ● |
| 12 | L | 315 | 49 | 14 | 22 | 19 | HS10 | 0.14 | ● |
| 14 | S | 630 | 63 | 22 | 27 | 24 | HS15 | 0.30 | ● |
| 15 | L | 315 | 24 | 16 | 27 | 24 | HS10 | 0.23 | ● |
| 16 | S | 400 | 65 | 21 | 30 | 27 | HS15 | 0.35 | ● |
| 18 | L | 315 | 56 | 16 | 32 | 27 | HS10 | 0.35 | ● |
| 20 | S | 400 | 73 | 23 | 36 | 32 | HS15 | 0.58 | ● |
| 22 | L | 160 | 63 | 20 | 36 | 32 | HS10 | 0.44 | ● |
| 25 | S | 400 | 84 | 26 | 46 | 41 | HS15 | 0.95 | ● |
| 28 | L | 160 | 65 | 21 | 41 | 41 | HS10 | 0.55 | ● |
| 30 | S | 400 | 88 | 27 | 50 | 46 | HS15 | 1.12 | ● |



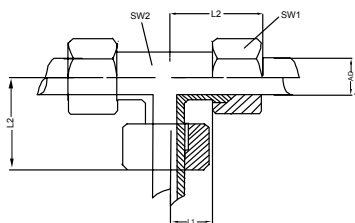
Union Elbow

DIN 2353 / DIN EN ISO 8434-1
EN 10204 3.1



| AD mm | Code | Bar | L1 mm | L2 mm | SW1 mm | SW2 mm | Art. No. | Kg / pc | 316 Ti |
|-------|------|-----|-------|-------|--------|--------|----------|---------|--------|
| 6 | L | 315 | 27 | 12.0 | 14 | 12 | HE10 | 0.04 | ● |
| 8 | L | 315 | 29 | 14.0 | 17 | 12 | HE10 | 0.06 | ● |
| 10 | L | 315 | 30 | 15.0 | 19 | 14 | HE10 | 0.07 | ● |
| 12 | L | 315 | 32 | 17.0 | 22 | 17 | HE10 | 0.10 | ● |
| 14 | S | 630 | 40 | 22.0 | 27 | 19 | HE15 | 0.21 | ● |
| 15 | L | 315 | 36 | 21.0 | 27 | 19 | HE10 | 0.17 | ● |
| 16 | S | 400 | 43 | 24.5 | 30 | 24 | HE15 | 0.26 | ● |
| 18 | L | 315 | 40 | 23.5 | 32 | 24 | HE10 | 0.25 | ● |
| 20 | S | 400 | 48 | 26.5 | 36 | 27 | HE15 | 0.41 | ● |
| 22 | L | 160 | 44 | 27.5 | 36 | 27 | HE10 | 0.32 | ● |
| 25 | S | 400 | 54 | 30.0 | 46 | 36 | HE15 | 0.45 | ● |
| 28 | L | 160 | 47 | 30.5 | 41 | 36 | HE10 | 1.00 | ● |
| 30 | S | 400 | 62 | 35.5 | 50 | 41 | HE15 | 1.68 | ● |

Cutting Ring Fittings

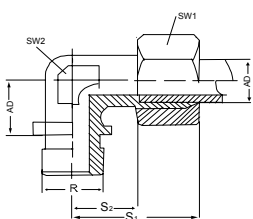


Union Tee

DIN 2353 / DIN EN ISO 8434-1
EN 10204 3.1



| AD mm | Code | Bar | L1 mm | L2 mm | SW1 mm | SW2 mm | Art. No. | Kg / pc | 316 Ti |
|-------|------|-----|-------|-------|--------|--------|----------|---------|--------|
| 6 | L | 315 | 12.0 | 27 | 14 | 12 | HT10 | 0.002 | ● |
| 8 | L | 315 | 14.0 | 29 | 17 | 12 | HT10 | 0.002 | ● |
| 10 | L | 315 | 15.0 | 60 | 19 | 14 | HT10 | 0.003 | ● |
| 12 | L | 315 | 17.0 | 32 | 22 | 17 | HT10 | 0.003 | ● |
| 14 | S | 630 | 22.0 | 40 | 27 | 17 | HT15 | 0.004 | ● |
| 15 | L | 315 | 21.0 | 36 | 27 | 19 | HT10 | 0.004 | ● |
| 16 | S | 400 | 24.4 | 43 | 30 | 24 | HT15 | 0.004 | ● |
| 18 | L | 315 | 23.5 | 40 | 32 | 24 | HT10 | 0.005 | ● |
| 20 | S | 400 | 26.5 | 48 | 36 | 27 | HT15 | 0.009 | ● |
| 22 | L | 160 | 27.5 | 44 | 36 | 27 | HT10 | 0.006 | ● |
| 25 | S | 400 | 3.0 | 54 | 46 | 36 | HT15 | 0.011 | ● |
| 28 | L | 160 | 30.5 | 47 | 41 | 36 | HT10 | 0.008 | ● |
| 30 | S | 400 | 35.5 | 62 | 50 | 41 | HT15 | 0.015 | ● |



Male Elbow

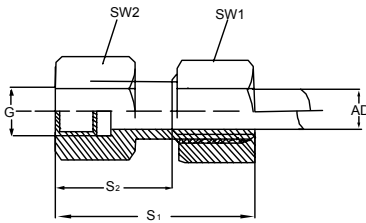
DIN 2353 / DIN EN ISO 8434-1
EN 10204 3.1



| AD mm | Code | Bar | L1 mm | L2 mm | SW1 mm | SW2 mm | Art. No. | Kg / pc | 316 Ti |
|-------|------|-----|-------|-------|--------|--------|----------|---------|--------|
| 6 | 1/8" | L | 315 | 27 | 20.0 | 14 | HW30 | 0.03 | ● |
| 6 | 1/4" | L | 315 | 27 | 12.0 | 14 | HW30 | 0.06 | ● |
| 8 | 1/8" | L | 315 | 29 | 14.0 | 17 | HW30 | 0.05 | ● |
| 8 | 1/4" | L | 315 | 29 | 14.0 | 17 | HW30 | 0.06 | ● |
| 8 | 3/8" | L | 315 | 32 | 17.0 | 17 | HW30 | 0.08 | ● |
| 8 | 1/2" | L | 315 | 35 | 19.5 | 17 | HW30 | 0.10 | ● |
| 10 | 1/4" | L | 315 | 30 | 15.0 | 19 | HW30 | 0.06 | ● |
| 10 | 3/8" | L | 315 | 30 | 15.0 | 19 | HW30 | 0.06 | ● |
| 10 | 1/2" | L | 315 | 37 | 21.0 | 19 | HW30 | 0.09 | ● |
| 12 | 1/4" | L | 315 | 32 | 17.5 | 22 | HW30 | 0.07 | ● |
| 12 | 3/8" | L | 315 | 32 | 17.5 | 22 | HW30 | 0.08 | ● |
| 12 | 1/2" | L | 315 | 32 | 17.5 | 22 | HW30 | 0.11 | ● |
| 14 | 3/8" | S | 400 | 40 | 22.0 | 27 | HW35 | 0.15 | ● |
| 14 | 1/2" | S | 400 | 40 | 22.0 | 27 | HW35 | 0.16 | ● |
| 15 | 3/8" | L | 315 | 36 | 21.0 | 27 | HW30 | 0.12 | ● |
| 15 | 1/2" | L | 315 | 36 | 21.0 | 27 | HW30 | 0.13 | ● |
| 16 | 1/2" | S | 400 | 43 | 24.5 | 30 | HW35 | 0.20 | ● |
| 18 | 1/2" | L | 315 | 40 | 23.5 | 32 | HW30 | 0.19 | ● |

● = Stock

Measures and drawings are guidelines

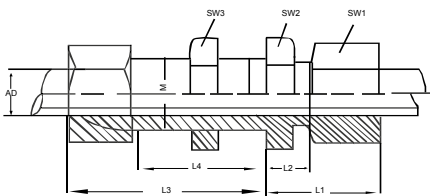


Female Connector

DIN 2353 / DIN EN ISO 8434-1
EN 10204 3.1



| AD mm | Code | Bar | G mm | S1 mm | S2 mm | SW1 mm | SW2 mm | Art. No. | Kg / pc | 316 Ti |
|-------|------|-----|--------|-------|-------|--------|--------|----------|---------|--------|
| 6 | L | 315 | 1/8" | 36.0 | 19.0 | 14 | 14 | HF20 | 0.03 | ● |
| 6 | L | 315 | 1/4" | 41.0 | 24.0 | 19 | 19 | HF20 | 0.04 | ● |
| 8 | L | 315 | 1/4" | 36.0 | 24.0 | 17 | 19 | HF20 | 0.05 | ● |
| 10 | L | 315 | 1/4" | 42.0 | 25.0 | 19 | 19 | HF20 | 0.06 | ● |
| 12 | L | 315 | 3/8" | 43.0 | 26.0 | 22 | 24 | HF20 | 0.09 | ● |
| 12 | L | 315 | 1/2" | 48.0 | 30.0 | 22 | 27 | HF20 | 0.10 | ● |
| 14 | S | 400 | 1/2" | 52.0 | 32.0 | 27 | 27 | HF25 | 0.15 | ● |
| 15 | L | 315 | 3/8" | 46.0 | 27.0 | 27 | 24 | HF20 | 0.10 | ● |
| 15 | L | 315 | 1/2" | 49.0 | 31.0 | 27 | 27 | HF20 | 0.11 | ● |
| 16 | S | 400 | 1/2" | 53.0 | 31.5 | 30 | 27 | HF25 | 0.18 | ● |
| 18 | L | 315 | 3/8" | 47.0 | 26.5 | 32 | 27 | HF20 | 0.14 | ● |
| 18 | L | 315 | 1/2" | 50.5 | 30.5 | 32 | 27 | HF20 | 0.15 | ● |
| 20 | S | 400 | 1/2" | 57.0 | 57.0 | 36 | 32 | HF25 | 0.25 | ● |
| 20 | S | 400 | 3/4" | 60.0 | 60.0 | 36 | 32 | HF25 | 0.30 | ● |
| 22 | L | 160 | 3/4" | 56.0 | 35.5 | 36 | 32 | HF20 | 0.27 | ● |
| 25 | S | 315 | 1" | 66.5 | 37.5 | 46 | 41 | HF25 | 0.47 | ● |
| 28 | L | 160 | 1" | 60.5 | 38.0 | 41 | 41 | HF20 | 0.31 | ● |
| 30 | S | 315 | 1.1/4" | 72.5 | 42.0 | 50 | 55 | HF25 | 0.72 | ● |

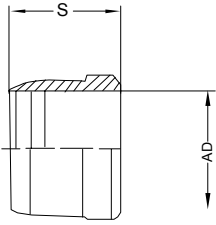


Bulk Head Union

DIN 2353 / DIN EN ISO 8434-1
EN 10204 3.1



| AD mm | Code | Bar | L1 mm | L2 mm | L3 mm | L4 mm | SW1 mm | SW2 mm | SW3 mm | Art. No. | Kg / pc | 316 Ti |
|-------|------|-----|-------|-------|-------|-------|--------|--------|--------|----------|---------|--------|
| 6 | L | 315 | 22 | 7.0 | 42 | 27 | 14 | 17 | 17 | HB10 | 0.06 | ● |
| 8 | L | 315 | 23 | 8.0 | 42 | 27 | 17 | 19 | 19 | HB10 | 0.08 | ● |
| 10 | L | 315 | 25 | 10.0 | 43 | 28 | 19 | 22 | 22 | HB10 | 0.11 | ● |
| 12 | L | 315 | 25 | 10.0 | 44 | 29 | 22 | 24 | 24 | HB10 | 0.14 | ● |
| 14 | S | 630 | 35 | 17.0 | 50 | 32 | 27 | 30 | 30 | HB15 | 0.30 | ● |
| 15 | L | 315 | 27 | 12.0 | 46 | 31 | 27 | 30 | 27 | HB10 | 0.23 | ● |
| 16 | S | 400 | 35 | 16.5 | 50 | 31.5 | 30 | 32 | 32 | HB15 | 0.35 | ● |



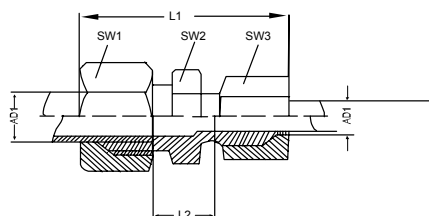
Cutting Ring

DIN 2353 / DIN EN ISO 8434-1
EN 10204 3.1



| AD mm | Code | S mm | Art. No. | Kg / pc | 316 Ti |
|-------|------|------|----------|---------|--------|
| 6 | L | 9.0 | HC40 | 0.002 | ● |
| 8 | L | 9.0 | HC40 | 0.002 | ● |
| 10 | L | 9.5 | HC40 | 0.003 | ● |
| 12 | L | 9.5 | HC40 | 0.003 | ● |
| 14 | S | 10.0 | HC45 | 0.004 | ● |
| 15 | L | 10.0 | HC40 | 0.004 | ● |
| 16 | S | 10.0 | HC45 | 0.004 | ● |
| 18 | L | 10.0 | HC40 | 0.005 | ● |
| 20 | S | 11.5 | HC45 | 0.009 | ● |
| 22 | L | 11.0 | HC40 | 0.006 | ● |
| 25 | S | 12.5 | HC45 | 0.011 | ● |
| 30 | S | 12.5 | HC45 | 0.015 | ● |
| | | | | | |
| | | | | | |
| | | | | | |
| | | | | | |
| | | | | | |
| | | | | | |
| | | | | | |
| | | | | | |
| | | | | | |
| | | | | | |
| | | | | | |
| | | | | | |
| | | | | | |
| | | | | | |
| | | | | | |
| | | | | | |
| | | | | | |
| | | | | | |
| | | | | | |
| | | | | | |
| | | | | | |
| | | | | | |
| | | | | | |
| | | | | | |
| | | | | | |
| | | | | | |
| | | | | | |
| | | | | | |
| | | | | | |

● = Stock
Measures and drawings are guidelines



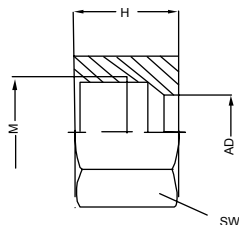
Straight Reducing Union

DIN 2353 / DIN EN ISO 8434-1
EN 10204 3.1



| AD1 mm | AD1 mm | Code | Bar | L1 mm | L2 mm | SW1 mm | SW2 mm | SW3 mm | Art. No. | Kg / pc | 316 Ti |
|--------|--------|------|-----|-------|-------|--------|--------|--------|----------|---------|--------|
| 8 | 6 | L | 315 | 45.5 | 11.0 | 17 | 14 | 14 | HR10 | 0.05 | ● |
| 10 | 6 | L | 315 | 47.0 | 12.0 | 19 | 17 | 14 | HR10 | 0.06 | ● |
| 10 | 8 | L | 315 | 47.0 | 12.0 | 19 | 17 | 17 | HR10 | 0.06 | ● |
| 12 | 6 | L | 315 | 48.0 | 13.0 | 22 | 19 | 14 | HR10 | 0.06 | ● |
| 12 | 8 | L | 315 | 48.0 | 13.0 | 22 | 19 | 17 | HR10 | 0.07 | ● |
| 12 | 10 | L | 315 | 49.5 | 14.0 | 22 | 19 | 19 | HR10 | 0.08 | ● |
| 14 | 10 | S | 630 | 60.0 | 20.5 | 27 | 24 | 22 | HR15 | 0.13 | ● |
| 14 | 12 | S | 630 | 60.0 | 20.5 | 27 | 24 | 24 | HR15 | 0.17 | ● |
| 15 | 6 | L | 315 | 50.5 | 14.0 | 27 | 24 | 14 | HR10 | 0.10 | ● |
| 15 | 8 | L | 315 | 50.5 | 14.0 | 27 | 24 | 17 | HR10 | 0.11 | ● |
| 15 | 10 | L | 315 | 52.0 | 15.0 | 27 | 24 | 19 | HR10 | 0.11 | ● |
| 15 | 12 | L | 315 | 52.0 | 15.0 | 27 | 24 | 22 | HR10 | 0.12 | ● |
| 16 | 10 | S | 400 | 60.5 | 20.0 | 30 | 27 | 22 | HR15 | 0.19 | ● |
| 16 | 12 | S | 400 | 60.5 | 20.0 | 30 | 27 | 24 | HR15 | 0.19 | ● |
| 16 | 14 | S | 400 | 63.5 | 21.5 | 30 | 27 | 27 | HR15 | 0.22 | ● |
| 18 | 8 | L | 315 | 52.0 | 14.5 | 32 | 27 | 27 | HR10 | 0.12 | ● |
| 18 | 10 | L | 315 | 53.5 | 15.5 | 32 | 27 | 19 | HR10 | 0.15 | ● |
| 18 | 12 | L | 315 | 53.5 | 15.5 | 32 | 27 | 22 | HR10 | 0.16 | ● |
| 18 | 15 | L | 315 | 56.5 | 16.5 | 32 | 27 | 27 | HR10 | 0.18 | ● |
| 20 | 10 | S | 400 | 65.5 | 22.0 | 36 | 32 | 22 | HR15 | 0.27 | ● |
| 20 | 12 | S | 400 | 65.5 | 22.0 | 36 | 32 | 24 | HR15 | 0.28 | ● |
| 20 | 14 | S | 400 | 68.5 | 23.0 | 36 | 32 | 27 | HR15 | 0.30 | ● |
| 20 | 16 | S | 400 | 69.5 | 23.0 | 36 | 32 | 30 | HR15 | 0.32 | ● |
| 22 | 12 | L | 160 | 57.0 | 17.5 | 36 | 32 | 22 | HR10 | 0.20 | ● |
| 22 | 15 | L | 160 | 59.0 | 18.5 | 36 | 32 | 27 | HR10 | 0.22 | ● |
| 28 | 22 | L | 160 | 64.0 | 21.0 | 41 | 41 | 36 | HR10 | 0.31 | ● |

Cutting Ring Fittings

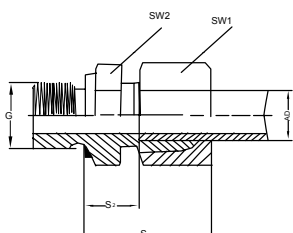


Nut

DIN 2353 / DIN EN ISO 8434-1
EN 10204 3.1



| AD mm | Code | Bar | SW mm | H mm | M mm | Art. No. | Kg / pc | 316 Ti |
|-------|------|-----|-------|------|---------|----------|---------|--------|
| 6 | L | 315 | 14 | 14.5 | M12x1,5 | HN40 | 0.010 | ● |
| 8 | L | 315 | 17 | 14.5 | M14x1.5 | HN40 | 0.015 | ● |
| 10 | L | 315 | 19 | 15.5 | M16x1.5 | HN40 | 0.019 | ● |
| 12 | L | 315 | 22 | 15.5 | M18x1.5 | HN40 | 0.024 | ● |
| 15 | L | 315 | 27 | 17 | M22x1.5 | HN40 | 0.041 | ● |
| 22 | L | 160 | 36 | 20 | M30x2 | HN40 | 0.081 | ● |
| 28 | L | 160 | 41 | 21 | M36x2 | HN40 | 0.091 | ● |
| 14 | S | 630 | 27 | 20.5 | M22x1,5 | HN45 | 0.050 | ● |
| 16 | S | 400 | 30 | 20.5 | M24x1,5 | HN45 | 0.064 | ● |
| 20 | S | 400 | 36 | 24 | M30x2 | HN45 | 0.102 | ● |
| 25 | S | 400 | 46 | 27 | M36x2 | HN45 | 0.210 | ● |



Male Connector

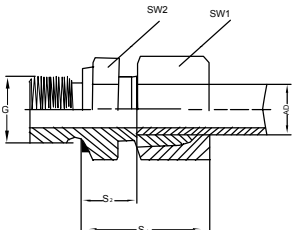
DIN 2353 / DIN EN ISO 8434-1
EN 10204 3.1



| AD mm | Code | Bar | G mm | SW1 mm | SW2 mm | S1 mm | S2 mm | Art. No. | Kg / pc | 316 Ti |
|-------|------|-----|------|--------|--------|-------|-------|----------|---------|--------|
| 6 | L | 315 | 1/8" | 14 | 14 | 23 | 8.5 | HM20 | 0.03 | ● |
| 6 | L | 315 | 1/4" | 14 | 17 | 27 | 9.0 | HM20 | 0.04 | ● |
| 6 | L | 315 | 3/8" | 14 | 22 | 27 | 11.5 | HM20 | 0.06 | ● |
| 6 | L | 315 | 1/2" | 14 | 27 | 29 | 12.0 | HM20 | 0.10 | ● |
| 8 | L | 315 | 1/8" | 17 | 14 | 26 | 9.5 | HM20 | 0.03 | ● |
| 8 | L | 315 | 1/4" | 17 | 19 | 25 | 10.0 | HM20 | 0.04 | ● |
| 8 | L | 315 | 3/8" | 17 | 22 | 28.5 | 11.5 | HM20 | 0.06 | ● |
| 8 | L | 315 | 1/2" | 17 | 27 | 28.5 | 13.0 | HM20 | 0.10 | ● |
| 10 | L | 315 | 1/8" | 19 | 17 | 27.5 | 11.0 | HM20 | 0.05 | ● |
| 10 | L | 315 | 1/4" | 19 | 19 | 26 | 11.0 | HM20 | 0.05 | ● |
| 10 | L | 315 | 3/8" | 19 | 22 | 30.5 | 12.5 | HM20 | 0.09 | ● |
| 10 | L | 315 | 1/2" | 19 | 27 | 32.5 | 13.0 | HM20 | 0.10 | ● |
| 12 | L | 315 | 1/8" | 22 | 19 | 29 | 11.0 | HM20 | 0.05 | ● |
| 12 | L | 315 | 1/4" | 22 | 19 | 30 | 12.0 | HM20 | 0.06 | ● |
| 12 | L | 315 | 3/8" | 22 | 22 | 27 | 12.5 | HM20 | 0.07 | ● |
| 12 | L | 315 | 1/2" | 22 | 27 | 31 | 13.0 | HM20 | 0.10 | ● |
| 14 | S | 630 | 3/8" | 27 | 24 | | 17.0 | HM25 | 0.13 | ● |
| 14 | S | 630 | 1/2" | 27 | 27 | 37 | 19.0 | HM25 | 0.15 | ● |
| 14 | S | 630 | 3/4" | 27 | 32 | | 19.0 | HM25 | 0.20 | ● |

● = Stock

Measures and drawings are guidelines



Male Connector

DIN 2353 / DIN EN ISO 8434-1
EN 10204 3.1



| AD mm | Code | Bar | G mm | SW1 mm | SW2 mm | S1 mm | S2 mm | Art. No. | Kg / pc | 316 Ti |
|-------|------|-----|--------|--------|--------|-------|-------|----------|---------|--------|
| 15 | L | 315 | 1/4" | 27 | 24 | 32 | 13.0 | HM20 | 0.08 | ● |
| 15 | L | 315 | 3/8" | 27 | 24 | 31 | 13.5 | HM20 | 0.10 | ● |
| 15 | L | 315 | 1/2" | 27 | 27 | 29 | 14.0 | HM20 | 0.11 | ● |
| 15 | L | 315 | 3/4" | 27 | 32 | 32.5 | 15.0 | HM20 | 0.17 | ● |
| 16 | S | 400 | 3/8" | 30 | 27 | | 18.0 | HM25 | 0.16 | ● |
| 16 | S | 400 | 1/2" | 30 | 27 | 37 | 14.0 | HM25 | 0.16 | ● |
| 16 | S | 400 | 3/4" | 30 | 32 | 39 | 20.5 | HM25 | 0.21 | ● |
| 18 | L | 315 | 3/8" | 32 | 27 | 33 | 12.5 | HM20 | 0.14 | ● |
| 18 | L | 315 | 1/2" | 32 | 27 | 31 | 14.5 | HM20 | 0.14 | ● |
| 18 | L | 315 | 3/4" | 32 | 32 | 34 | 14.5 | HM20 | 0.19 | ● |
| 20 | S | 400 | 1/2" | 36 | 32 | | 20.5 | HM25 | 0.25 | ● |
| 20 | S | 400 | 3/4" | 36 | 32 | 42 | 20.5 | HM25 | 0.28 | ● |
| 20 | S | 400 | 1" | 36 | 41 | | 22.5 | HM25 | 0.39 | ● |
| 20 | S | 400 | 1.1/4" | 36 | 50 | | 22.5 | HM25 | 0.40 | ● |
| 22 | L | 160 | 1/2" | 36 | 32 | 37 | 16.5 | HM20 | 0.20 | ● |
| 22 | L | 160 | 3/4" | 36 | 32 | 33 | 16.5 | HM20 | 0.20 | ● |
| 22 | L | 160 | 1" | 36 | 41 | 38 | 17.5 | HM20 | 0.29 | ● |
| 25 | S | 400 | 1/2" | 46 | 41 | | 23.0 | HM25 | 0.40 | ● |
| 25 | S | 400 | 3/4" | 46 | 41 | | 23.0 | HM25 | 0.46 | ● |
| 25 | S | 400 | 1" | 46 | 41 | 47 | 18.0 | HM25 | 0.49 | ● |
| 25 | S | 400 | 1.1/4" | 46 | 50 | | 23.0 | HM25 | 0.67 | ● |
| 28 | L | 160 | 1/2" | 41 | 41 | | 17.5 | HM20 | 0.20 | ● |
| 28 | L | 160 | 3/4" | 41 | 41 | 38 | 17.5 | HM20 | 0.30 | ● |
| 28 | L | 160 | 1" | 41 | 41 | 34 | 17.5 | HM20 | 0.27 | ● |
| 28 | L | 160 | 1.1/4" | 41 | 50 | | 18.5 | HM20 | 0.35 | ● |
| 30 | S | 400 | 1" | 50 | 46 | | 23.5 | HM20 | 0.58 | ● |
| 30 | S | 400 | 1.1/4" | 50 | 50 | 50 | 23.5 | HM25 | 0.67 | ● |
| 30 | S | 400 | 1.1/2" | 50 | 55 | | 23.5 | HM25 | 0.67 | ● |